



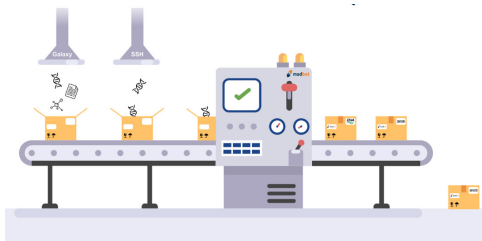
madbot

by IFB

The Metadata And Data Brokering Online Tool

A new approach to sharing and managing scientific data and metadata

Developed by the Institut Français de Bioinformatique (IFB/ELIXIR-FR), madbot is your co-pilot for your scientific data. Organise, manage and publish your research effortlessly, with metadata that finally makes sense.



LOCATE YOUR DATA

Find out where your data is stored in real time.



WORKING AS A TEAM

Collaborate easily with your team.

ORGANISATION OF METADATA

Organise and structure your metadata with ease.



PUBLISH IN ONE CLICK

Publish your data and metadata to general-purpose or thematic data warehouses instantly.

WHY USE MADBOT?

1

Accessibility: An intuitive interface designed for researchers without technical expertise, and an API for developers.

2

To put it simply: madbot is revolutionising metadata management: simple, accurate and standards-compliant.

3

Publish easily: madbot simplifies every stage of research data management, from collection to submission, with technical expertise.

WHO IS IT FOR?

All researchers, engineers, data-generating platforms and teams within the scientific community.

PLUGINS ALREADY AVAILABLE!

Data sources: Galaxy, Omero, S3, SSHFS.

Metadata standards: Dublin Core, Darwin Core, ENA, Recherche Data Gouv, Zenodo.

Repositories: ENA, Recherche Data Gouv, Zenodo.

and many more to come!

List of features

Tracking your data efficiently

madbot is a web application that allows you to identify exactly where your research data is stored and how accessible it is.

Describe your data more easily

madbot simplifies metadata management through an intuitive interface, inheritance logic, automatic validation and connections to reliable metadata sources (ontologies, taxonomies, etc.). madbot ensures that metadata is accurate, reusable and compliant with data warehouse standards.

Submit without the constraints

madbot offers researchers a single interface for publishing their data and metadata across a wide range of data repositories, whether general-purpose (Recherche data Gouv, Zenodo, etc.) or subject-specific (ENA, etc.).

Developer friendly

madbot is based on a fully documented open REST API. Everything that can be done in the web client is also fully scriptable.

Get started now!

- **Create your account on:** madbot.france-bioinformatique.fr
- You will also find our **user and developer documentation** there.
- Would you like to talk about or mention the madbot project? You'll find a **communication kit** on the website.
- If you'd like to stay up to date with the latest news from the project, subscribe to the **IFB/ELIXIR-Fr newsletter** (www.ifb-elixir.fr).



An open-source project

The **code and documentation** for a local deployment are freely available:

<https://gitlab.com/ifb-elixirfr/madbot>

The **national platform** deployed by the IFB is available **free** of charge to all academic users.

Contact

- Chat with the developers in the **madbot forum on Tchap**.
- Send us an **email**:
ifb-madbot@groupes.france-bioinformatique.fr
- Interested in **participating in the project**? Join our working group!



This resource is developed by IFB, the French Node of ELIXIR.

Supported by



Financially supported by **ANR-11-INBS-0013** and **ANR-21-ESRE-0048**.

